

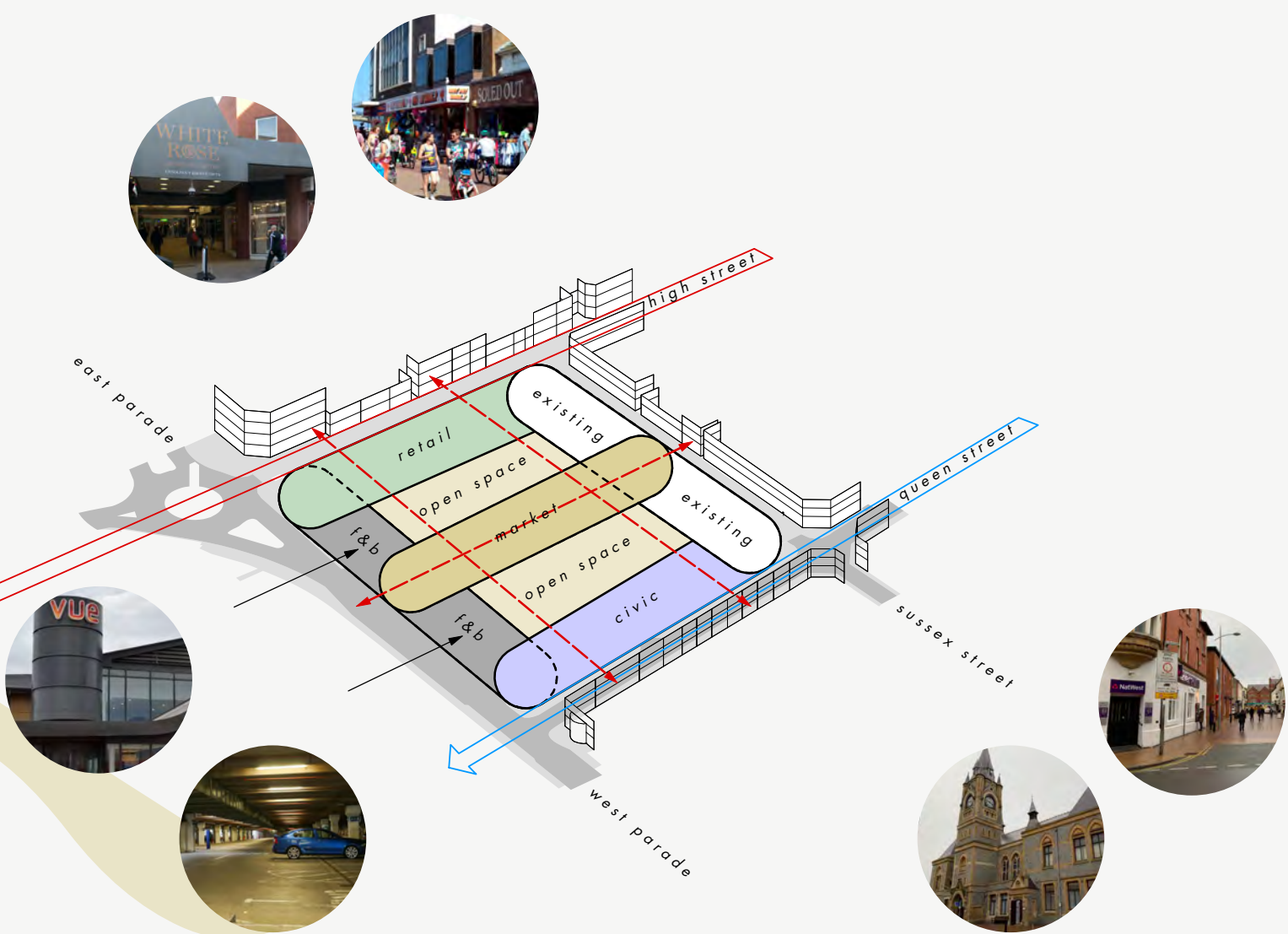
Prosiectau Allweddol

Bydd amrywiaeth o brosiectau cyffrous yn newid siâp a theimlad Canol Tref y Rhyl. Mae'r ddogfen Weledigaeth yn dangos sut fydd y rhain yn cael eu clymu ynghyd. Mae rhai o'r prosiectau allweddol yr ydym eisoes wedi ymrwymo iddynt i'w gweld isod.

Marchnad y Frenhines

Ardal amlbwrpas fywiog sy'n cysylltu canol y dref â'r traeth.

Lleoliad arbennig sy'n ymateb i'r hyn y mae'r gymuned wedi gofyn amdano: manwerthu o ansawdd uchel, pethau i wneud, llefydd i fwya ac ardal gyhoeddus o ansawdd uchel.



Datblygiad Preswyl o Ansawdd Uchel Uwchben Unedau Manwerthu Annibynnol

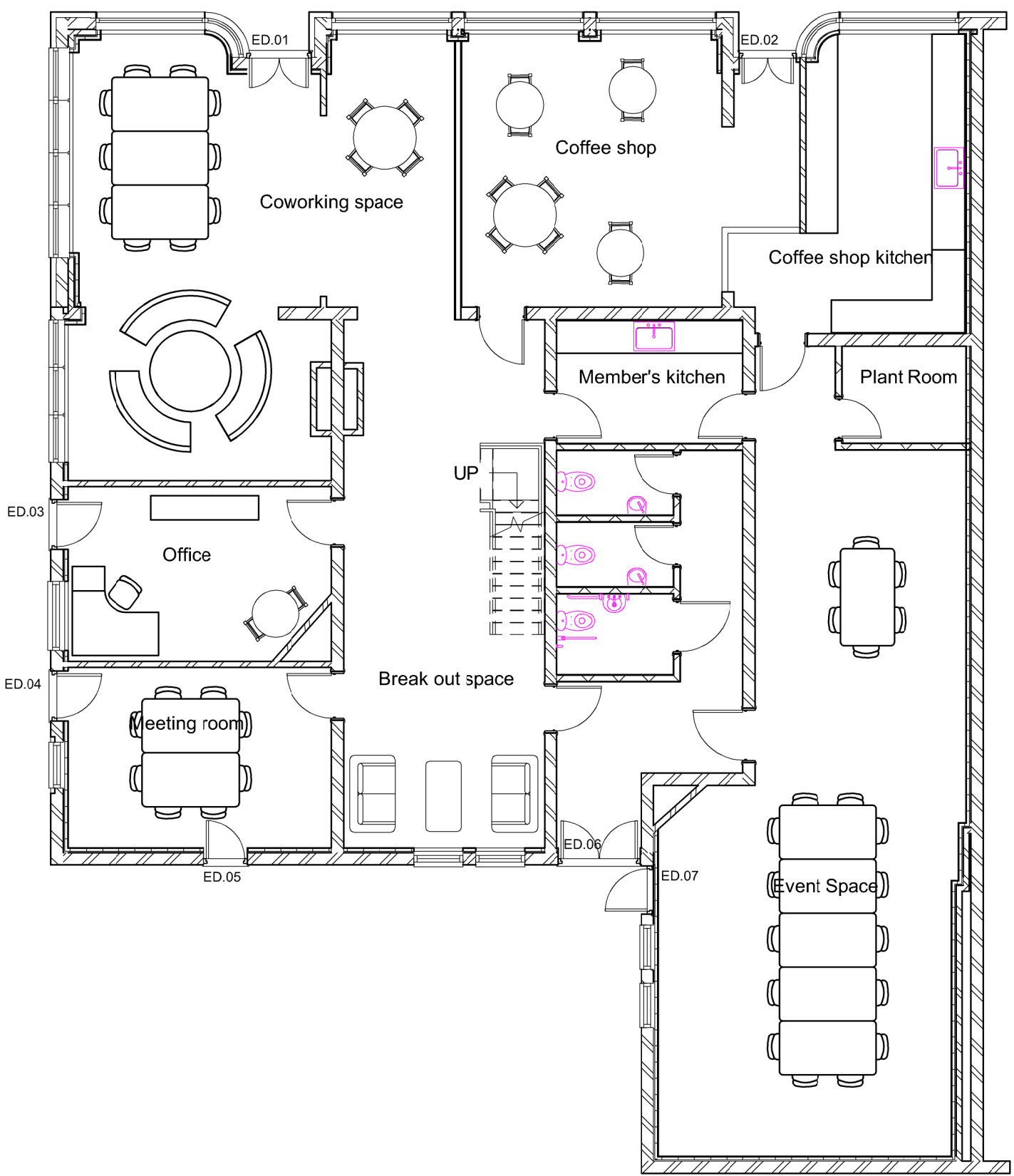
Bydd hen siopau Granite Outdoors a Next yn darparu'r unedau manwerthu llai y mae'r dref eu hangen i ddenu manwerthwyr annibynnol.

Uwchben y siopau, bydd datblygiad preswyl o ansawdd uchel yn dod â chartrefi a phobl i Ganol Tref y Rhyl.

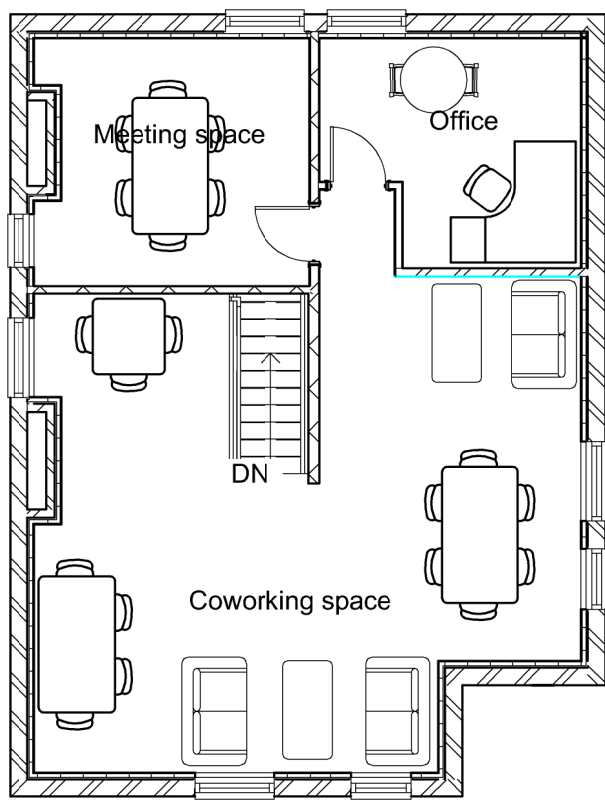


Canolfan dechnoleg

Byddwn yn newid hen safle'r Costigans i fod yn Ganolfan Dechnoleg a fydd yn darparu ardal waith hyblyg/a rennir rhad ar gyfer entrepreneuriaid lleol, gan ddod â busnesau newydd a chynyddu nifer yr ymwelwyr yng nghanol y dref.



Cynllun Llwr Gwaelod Arfaethedig



Cynllun Llwr Cyntaf Arfaethedig

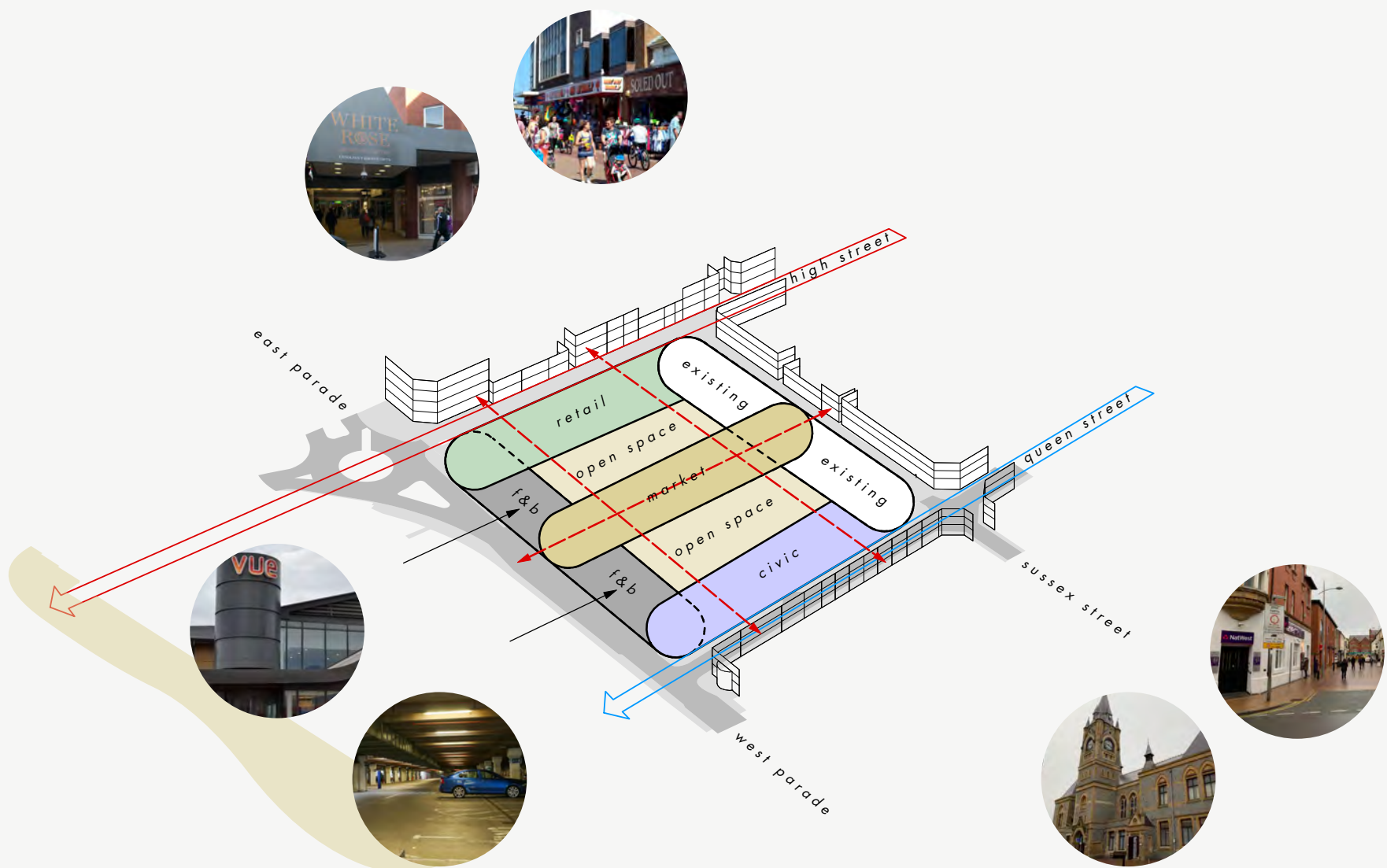
Key Projects

A variety of exciting projects will change the shape and feel of Rhyl Town Centre. The vision document shows how these will come together. Some of the key projects, that have already been committed to, are shown below.

Queen’s Market

A vibrant mixed used space that connects the town centre to the beach.

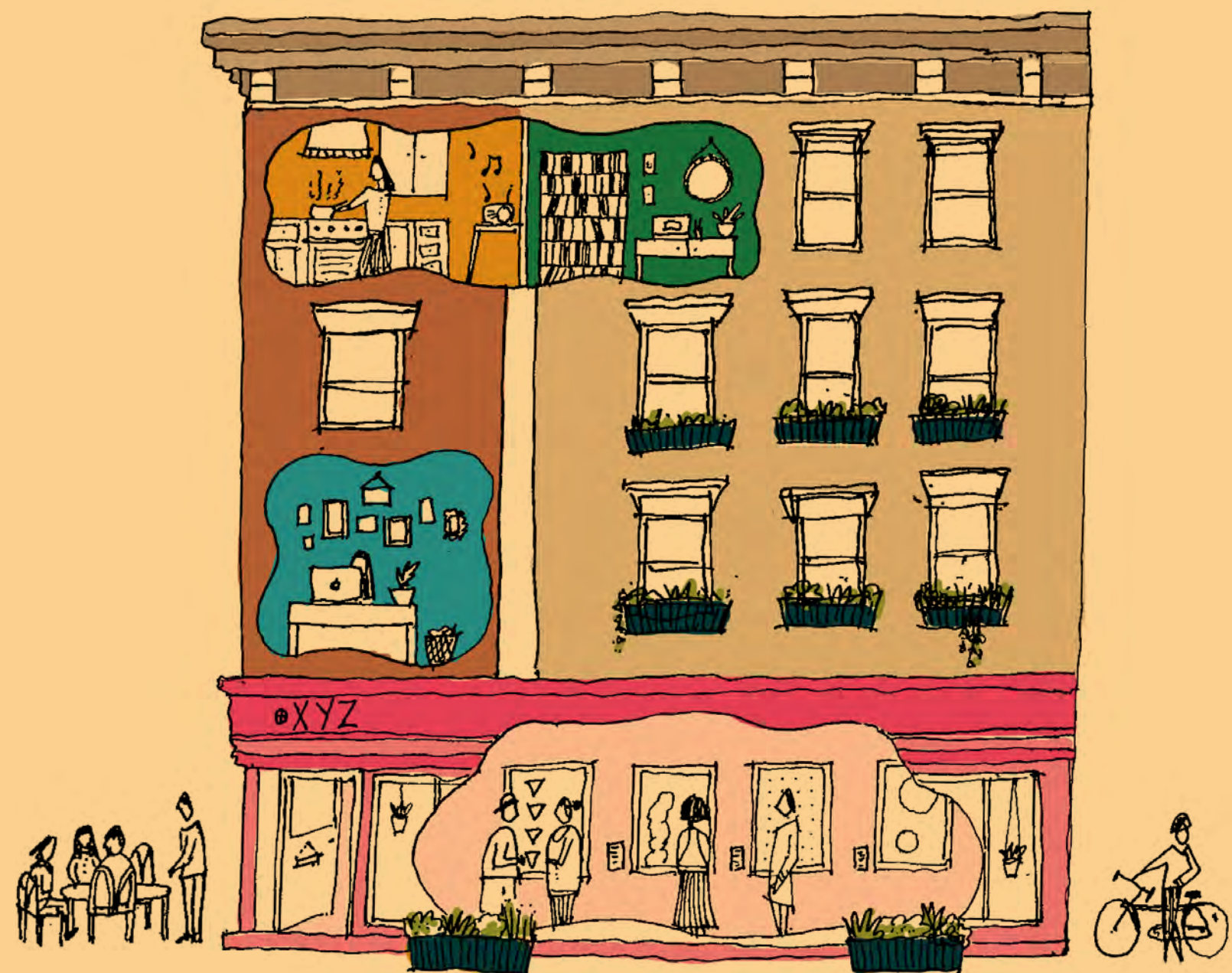
A must visit that responds to what the community has asked for quality retail, things to do, places to eat and quality public space.



High Quality Residential above Independent Retail

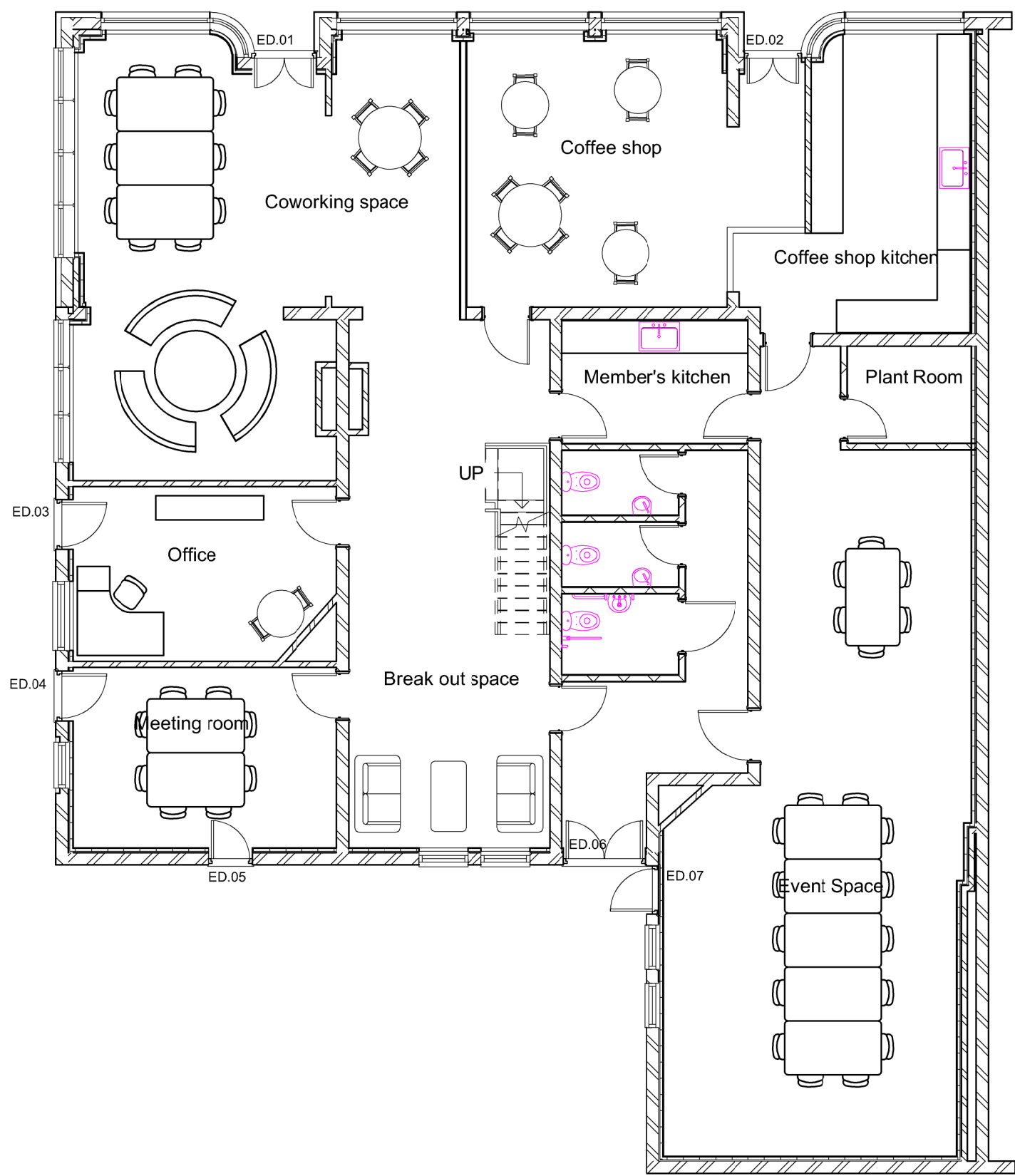
The former Granite and Next Stores will provide the smaller retail units the town needs to attract independent retailers.

Above the shops, high quality residential will bring homes and people into Rhyl Town Centre.

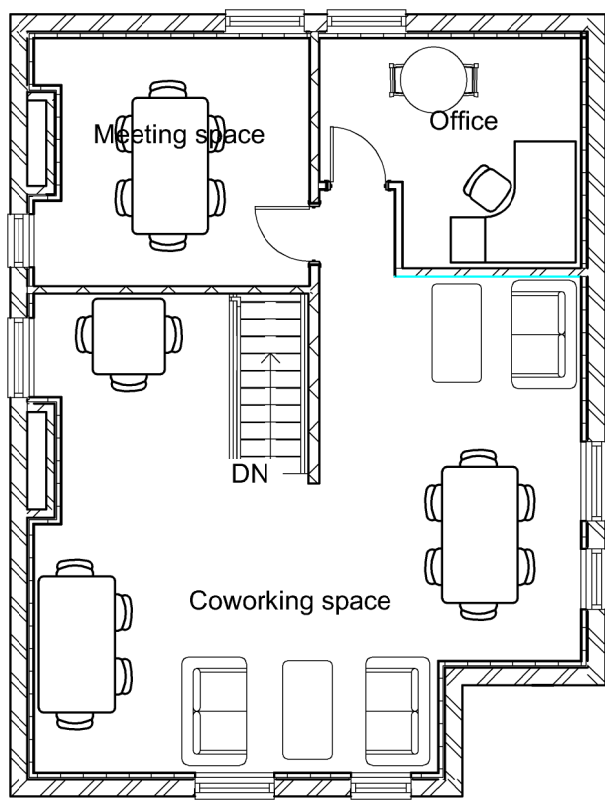


Tech Hub

Cositgan’s will become a Tech Hub providing low cost shared / flexible working space for local entrepreneurs, bringing new businesses and footfall into the town centre.



Proposed Ground Floor Plan



Proposed First Floor Plan